



# Huron Technologies

Illuminating Pathology™



## The Waiting is Over!



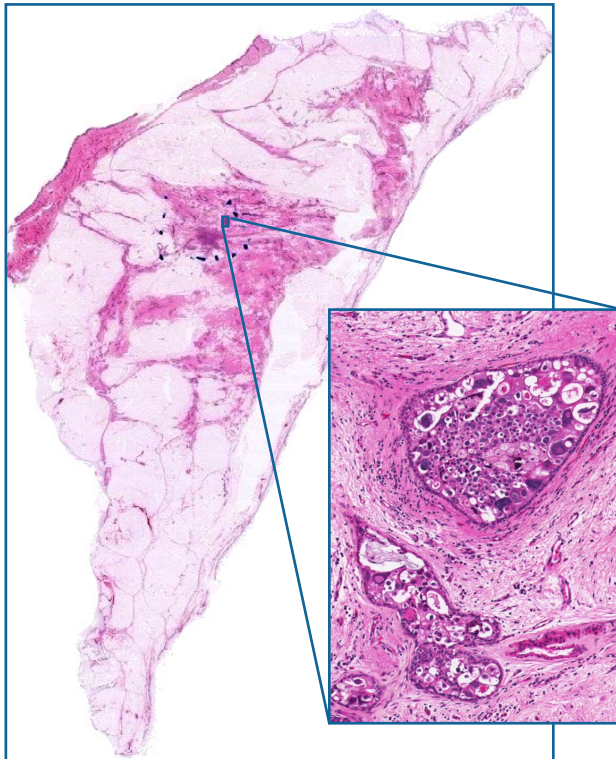
The World's Fastest Whole Slide Imaging (WSI) Digital Scanner has arrived. **The TISSUEScope™ HS** scans a **15mm x 15mm** specimen in **less than 30 seconds**.

## TISSUEScope™ HS Digital Slide Scanner

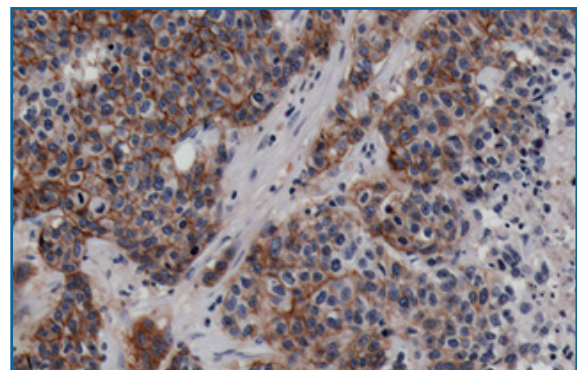
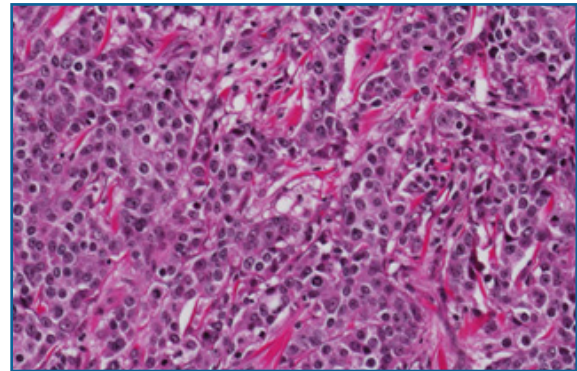
### High-Speed Imaging, Viewing and Management

Huron Technologies develops world leading whole slide imaging (WSI) solutions for digital pathology. The TISSUEScope™ HS is a high throughput platform capable of rapidly imaging up to 12 brightfield slides at once and up to 300 slides\* automatically.

Mastectomy - Whole Slide Imaging(WSI)

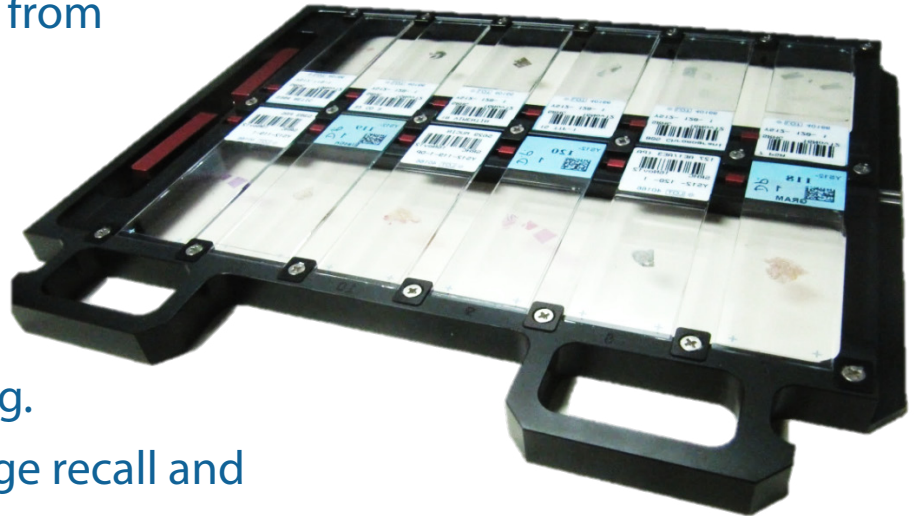


Sample Tissue, 20X Magnification



# Built for Speed

- High Speed: Less than 30 seconds to image a 15x15 mm area.
- High Throughput: Automatic setup and unattended operation.
- Flexible: Image any slide from 1"x 3" to 6"x 8" in size.
- High Capacity: Load and image 12 slides at one time.
- Easy Handling: Slide holders are optimized for simple, secure loading.
- Easy Viewing: Rapid image recall and seamless zooming.



## TISSUEScope™ HS - Technical Specifications

|                       |  |
|-----------------------|--|
| Imaging Mode          | <ul style="list-style-type: none"> <li>• Brightfield, 5mm field of view</li> </ul>   |
| Resolution (µm/pixel) | <ul style="list-style-type: none"> <li>• 0.50 at 20X      2.0 at 5X</li> <li>• 1.00 at 10X     5.0 at 2.5X</li> </ul>  |
| Speed                 | <ul style="list-style-type: none"> <li>• &lt;30 seconds for 15mm x 15mm at 0.5µm pixel</li> </ul>  |
| Slide Formats         | <ul style="list-style-type: none"> <li>• 25 mm x 75 mm (1" x 3")</li> <li>• 50 mm x 75 mm (2" x 3")</li> <li>• Any slide up to 150 mm x 200 mm (6" x 8")</li> </ul>  |
| File Format           | <ul style="list-style-type: none"> <li>• Non-proprietary 24-bit RGB Pyramidal BigTIFF                             <ul style="list-style-type: none"> <li>- Uncompressed, JPEG or JPEG 2000 Compression</li> </ul> </li> <li>• Export to JPEG, Flat TIFF and LZW Compressed TIFF</li> </ul> |
| Dimensions and Weight | <ul style="list-style-type: none"> <li>• 63 cm (25") Width</li> <li>• 52 cm (21") Length      100 Kg (220lbs)</li> <li>• 70 cm (28") Height</li> </ul>   |
| Operating Temperature | <ul style="list-style-type: none"> <li>• 10°C - 40°C (50°F - 105°F)</li> </ul>   |
| Certification         | <ul style="list-style-type: none"> <li>• CSA (CUS)</li> </ul>  |

Up to 300 Slide Capacity with the available 25 tray Autoloader



For more information about the **TISSUEScope™ HS** Scanner, please contact:

**Huron Technologies**

550 Parkside Drive, Unit B6

Waterloo, ON Canada N2L 5V4

T(519)886-9013 F(519)886-5300

E-mail: [info@Huron-Technologies.com](mailto:info@Huron-Technologies.com)

[www.Huron-Technologies.com](http://www.Huron-Technologies.com)

\*300 Slide Capacity requires optional 25 slide autoloader.

The TISSUEScope™ HS Scanner is intended for research and educational purposes only.

TISSUEScope™ and MACROview™ are trademarks of Huron Technologies International Inc. The TISSUEScope™ HS Scanner is based on one or more of the following U.S. Patents: 7,218,446 / 6,072,624 / 5,760,951 / 5,737,121 / 5,532,873 / 5,381,224 / 5,386,112 / 5,192,980. U.S. and International patents pending.